

# WHY JOIN THE CHAMBER?

WE ADVOCATE, BUILD, CONNECT, AND COMMUNICATE FOR BUSINESS!

## VISIBILITY

**STAND OUT** and get noticed as an active member of your business community!



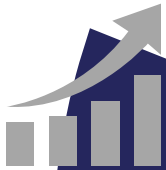
## NETWORK

It's **NOT** just who you know - it's who others know! Building business relationships is a powerful tool for you and your business!



## GROWTH

Take advantage of quality training and educational opportunities for business development, and be plugged into the economic growth of your community!



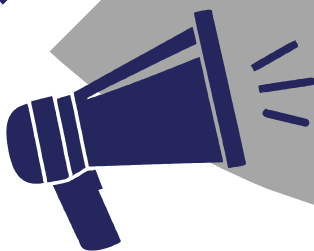
## IMPACT

Create a positive impact for your sales and workforce. Grow your referral base within the membership, and grow your workforce with Chamber job fairs.



## VOICE

We **advocate** on your behalf! Have a legislative voice through your Chamber's advocacy efforts at the state and national levels!



**JOIN NOW!**






**CONNECT WITH US ONLINE!**





# Your Chamber Tool Kit

 <p>Each Session is packed full of information to help you build your business through:</p> <ol style="list-style-type: none"><li>1. What the Chamber does for you</li><li>2. How to get involved</li><li>3. How to maximize your online listings through the Membership directory</li></ol> <p>Registration is required.</p>	 <p>MAC provides a weekly opportunity to present your 30-second "commercial" and network with like-minded individuals. We are growing with 40-50 members weekly! Coffee and donuts provided.</p> <p>Sponsorship information provided upon request.</p>	 <p>Biscuits &amp; Business is designed to provide assistance in major areas of business education and growth by featuring subject expert speakers on topics of importance to our business members.</p> <p>Registration is required.</p>	 <p>Party with a Purpose is a business relationship building event in a social setting. It is hosted by a member business/company and includes appetizers and drinks.</p> <p>Registration is required.</p>
 <p>The Rowlett Chamber of Commerce Professional Women's program offers events that grow, empower, and build the business community.</p> <p>This program is offered quarterly.</p> <p>Registration is required.</p>	 <p>Rowlett Young Professionals group is dedicated to fostering the dynamic growth of emerging professionals through impactful networking and collaboration.</p> <p>This program is offered monthly.</p> <p>Registration is required.</p>	 <p>Senior Service Alliance's mission is to showcase and educate about services and goods available to all seniors in the Rowlett area in hopes of making their lives easier to navigate. Our group represents trustworthy resources for our senior citizens.</p>	 <p>SCORE Counseling sessions are complimentary and will help you with a number of business-related topics including writing or reviewing your business plan, financial management, marketing and more.</p> <p>Appointment required.</p>

These are just a few of the programs and activities available to jump start your membership. Our goal is to help you get the most out of your investment in the Rowlett Area Chamber. We encourage you to take some time to review options by visiting our chamber website at [www.rowlettchamber.com](http://www.rowlettchamber.com).

If you have any questions, please contact the Chamber and any staff member will be glad to help you.

# Additional Opportunities

## RIBBON CUTTINGS

The Ribbon Cuttings are led by our Ambassadors and members.

Local business representatives and the family members you invite attend these events.

Location: You will pick the location. The Chamber office or your office

Date: You choose! We ask for a 2 - 3-week notice.

Time: We prefer Tuesday through Thursday at 11:30 am or 4:30 pm, but we can make adjustments upon request.

Contact Emily at [emily@rowlettchamber.com](mailto:emily@rowlettchamber.com) for more information.

## LEADERSHIP ROWLETT

Leadership Rowlett offers new learning opportunities in an atmosphere that encourages participants to work together while developing personal, organizational, and community leadership skills.

The curriculum combines lectures, dialogue, and interaction. Subjects are designed to encompass leadership techniques and knowledge of the community.

Learn more about Leadership Rowlett at [www.rowlettchamber.com/leadership-rowlett/](http://www.rowlettchamber.com/leadership-rowlett/)

## PARTNERSHIP OPPORTUNITIES

At the Rowlett Area Chamber, we consider sponsorships true partnerships, opportunities to work side-by-side with businesses that believe in supporting our community and strengthening local commerce. These partnerships allow businesses to invest in meaningful programs and events that elevate the entire Rowlett business community while showcasing their commitment to local growth.

Partnership opportunities can be found using the QR code to the right.



## STAY CONNECTED



INSTAGRAM



FACEBOOK



LINKEDIN



<b>MEMBERSHIP INVESTMENT LEVELS</b>	<b>LEAD</b>	<b>CATALYST</b>	<b>BUILD</b>
Chamber Website/ Home Page Recognition	✓		
Special Recognition at all Events	✓		
Complimentary Team Sponsorship at Annual Golf Classic	✓		
Invitation to Executive Leadership Roundtables with Chamber Board & Regional Influencers	✓		
Meet the Owner Video Link in Business Profile (website)	✓		
Logo featured on Signage at all Events and Programs	✓	✓	
Promotional Video Post on Social Media platforms	✓	✓	
Business Profile on Website (250 characters)	✓	✓	
E-Blasts to Membership for Special Promos or Events	5	3	1
Additional Business Categories in Membership Directory	3	2	1
Comp. Certification/Notarization: Certificates of Origin	✓	✓	✓
Company Logo in Online Listing	✓	✓	✓
Ribbon Cutting, Grand Opening or Milestone Celebrations	✓	✓	✓
Complimentary Board Room Usage (during business hrs.)	✓	✓	✓
Online Member Promotions & Job Listing Bank	✓	✓	✓
Member Discount for Leadership Rowlett Tuition	✓	✓	✓
Member-Only Pricing on All Events	✓	✓	✓
Quarterly "Marketing Tips for Members" Workshop	✓	✓	✓
Social Media Links on Business Profile	✓	✓	✓
Complimentary SCORE Business Counseling	✓	✓	✓
"New Member Spotlight" feature	✓	✓	✓
Listing Online & in Annual Relocation/Member Guide	✓	✓	✓
Chamber Resource Center Display (biz card or trifold)	✓	✓	✓
Membership Plaque & Proud Member Digital Icon	✓	✓	✓
Member-Only Business Referrals	✓	✓	✓
Members Get First Choice of Partnership Opportunities	✓	✓	✓
Weekly & Monthly Business Networking	✓	✓	✓
<b>Annual Investment</b>	<b>\$2480</b>	<b>\$1160</b>	<b>\$520</b>

**Effective: January 8, 2026**

**Contact staff for any of the following:**

- Quarterly or semi-annual payment arrangements
- Non-profit rate available



# RIBBON CUTTING DETAILS

Welcome to the **Rowlett Chamber!**

Hosting a **ribbon cutting ceremony** is a great way to bring attention to your business and allows to **officially welcome you to the Chamber and the community.**

## → Set a Date & Time

- Ribbon cutting and open house events are normally held Tuesday – Thursday at 11:30 AM or 4:30 PM.
- Contact Emily Stupnik at 972-412-5107 or email [emily@rowlettchamber.com](mailto:emily@rowlettchamber.com) to schedule your date/time.

## → Provide Snacks

- Providing light refreshments is optional, but they tend to enhance the experience for your guests.
- Please plan whatever best fits your budget and vision for your event.

## → Let People Know

- Invite your business contacts, vendors, family, and friends to share in your event.
- We recommend setting up an event on your business or personal Facebook page to promote to your followers.

## → The Chamber Will...

- Share on social media, in the weekly newsletter, and your event will be listed on the Chamber's online calendar.
- We will also announce your ribbon cutting or grand opening at all networking events, luncheons, etc.
- We will provide the ribbon and scissors for you.
- You will receive access to the drone footage, if you chose that option, as well as photos of the event.

## Typical Agenda

- Chamber staff and volunteers will arrive 15 minutes before your scheduled time.
- A representative of the chamber will provide an official welcome.
- You will be asked to introduce yourself, your staff, and your family and to tell the group about your business.
- You will then be presented with your membership plaque to display proudly.
- We will then assemble for an official photo and Facebook Live post.
- **Added Option:** We have recently added the option to have drone footage of your event for an additional fee of \$150.